



Advance Composite Engineering System

Imagination into Reality

Designing | Engineering | Prototyping | Tooling | Manufacturing

FOUNDERS:

- **Mr. Sanjay Siriah (Chief Director - Business)**

B.E.(Electrical) , IIM Ahmadabad - Marketing & Finance

Over 30 years of corporate experience as a top executive in Birla Group

- **Mr. Girish Kulkarni (Director - Operations)**

Qualification-B.E. (Production) - Mumbai University

Over 40 years of experience in Composite Materials and Tool making (Moulds, Fixtures)

Specialized in mould making

Executive Connect:

- **Mr. Ravindra Mate (Director Sales & Marketing)**

Over 30 years of corporate experience as a top executive in L&T cement and Ultratech Cement (Aditya Birla group)

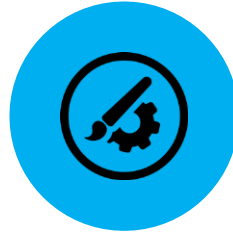
Mob No: +91 9702028330; Email id: ravindra.mate@advancedcomposite.in;

- **Mr. Bhupesh Kamrani (Sales Executive)**

B.E.(Civil) , M.tech (Structural Engineering), G.H. Rasoni University

Mob No: +91-9527980111; Email id: bhupesh.kamrani@advancedcomposite.in;

COMPANY INHOUSE ACTIVITIES:



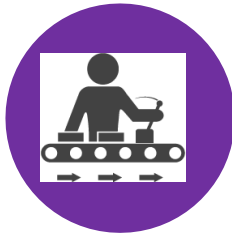
Designing



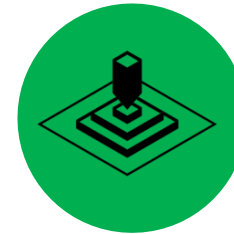
Installation



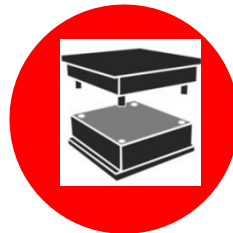
Engineering



Manufacturing



Prototyping

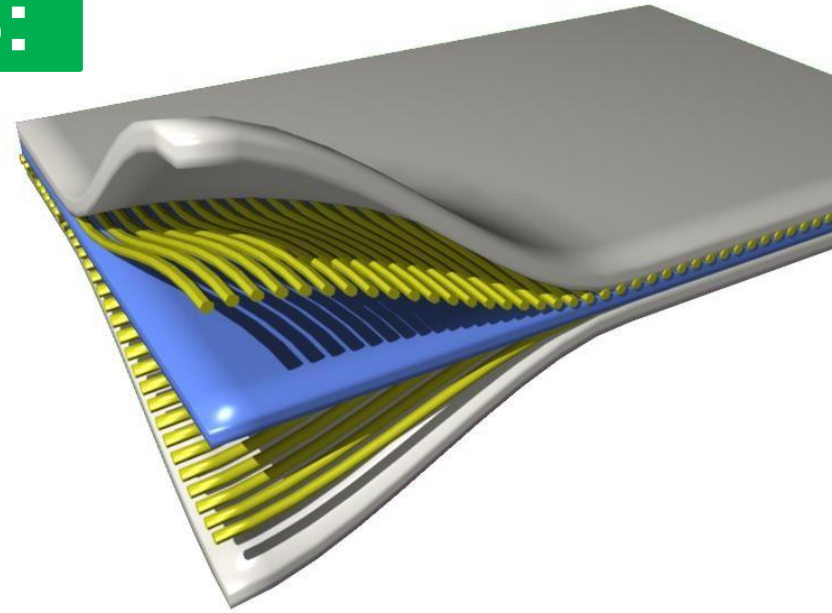


Tool Development

(100% INHOUSE ACTIVITIES)

WHAT ARE COMPOSITES:

- Composites are materials made by combining two or more natural or artificial elements (**with different physical or chemical properties**) that are stronger as a team than as individual players.
- ACES products are super strong, super light composites.



WHY COMPOSITES:

- Composites convert challenges to possibilities for Architects, Engineers, Developers and Contractors.
- Composites allows you to tailor the properties of materials, reinforcements and additives to get the exact characteristics you need in the final product – High strength and low weight, complex shapes and structures, textures, Fire retardancy, UV resistance, etc.
- Composites provide unique benefits over conventional materials such as steel, aggregates and concrete.

KEY BENEFITS:

- ✓ Customized products based on design and application.
- ✓ Any shape, size and span possible
- ✓ Super Strong, Super Light.
- ✓ No process limitations.
- ✓ Long lasting
- ✓ Mass production with speed is possible.

ADVANTAGES:

Product

- Lightweight
- High strength
- Corrosion resistant
- High strength-to-weight ratio
- High impact strength
- High electrical insulation
- Fire Retardant
- UV Resistant
- Customized surface finish
- Dimensional stability
- Seamless joints

Customer

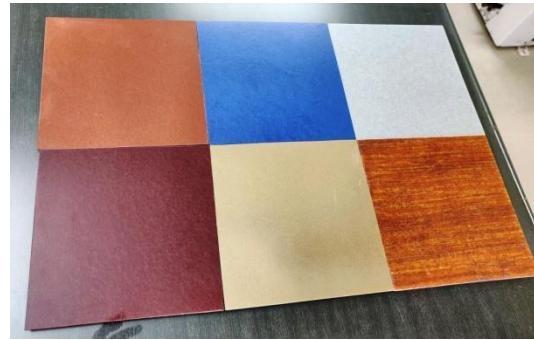
- Rapid production
- Rapid installation
- Long-term durability
- Low maintenance
- Easy to repair
- Reusable
- Zero water absorption
- Ease of handling
- Color pigmentation

ACES MATERIALS:

GRPC



Std pigmented



Variable thickness



Flyash concrete finish

ACES-22519
Poly-crete
(Super High Strength)



Best alternative to concrete & GRC.

Complex shapes possible



ACES-19319
(High Density Super Light)



ACES PRODUCTS:

CUSTOMIZED PRODUCTS:

- Screens / Facades
- Gate Structures
- Pillars
- Lintels
- Canopies
- Cladding
- Cornices
- Pergolas
- UGT/Mumty/Duct covers

STANDARD PRODUCTS:

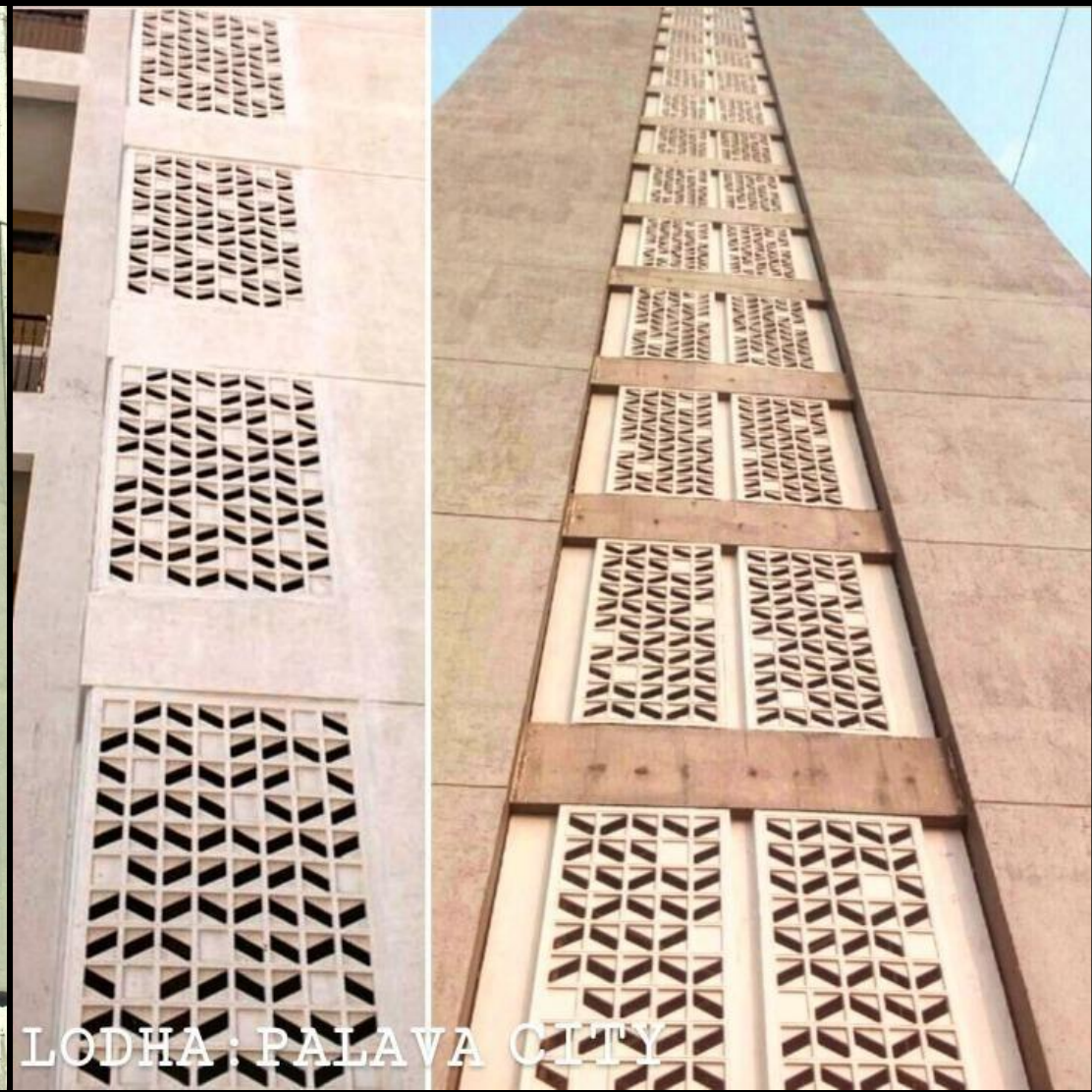
- Composite Walls (Tuff wall)
- Fins
- Stairs
- Window Chajja

INFRASTRUCTURE PRODUCTS:

- Platforms / Light weight slabs
- Dividers
- Multi-utility Ducts (Water, cables)
- Road/Sound barriers

EXECUTED PROJECTS

CUSTOMISED



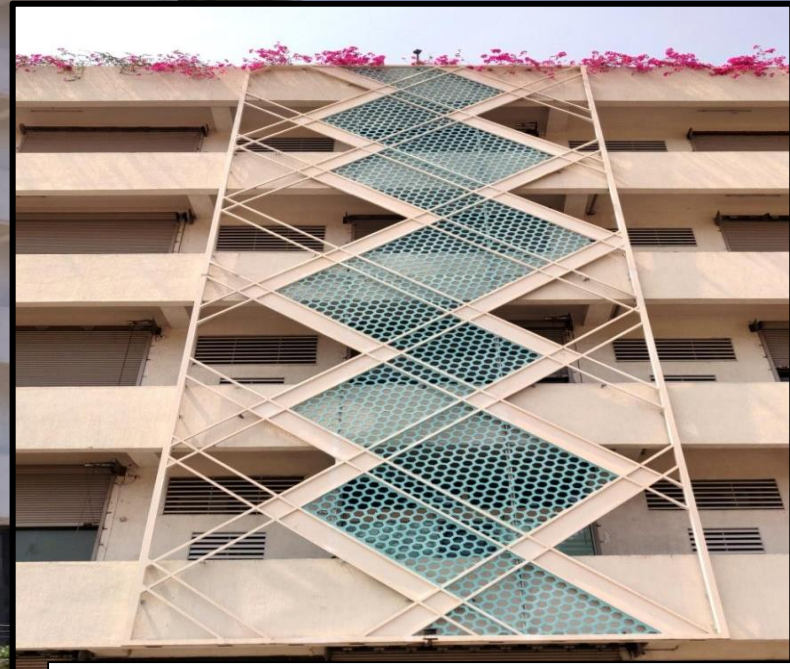
LODHA – PALAVA – COMPOSITE
SCREENS (GRPC)

Weight advantage :
Composite screen – 80 Kg
Concrete Screen – 600 Kg

LODHA –ANJUR UPPER THANE COMPOSITE SCREENS (GRPC)



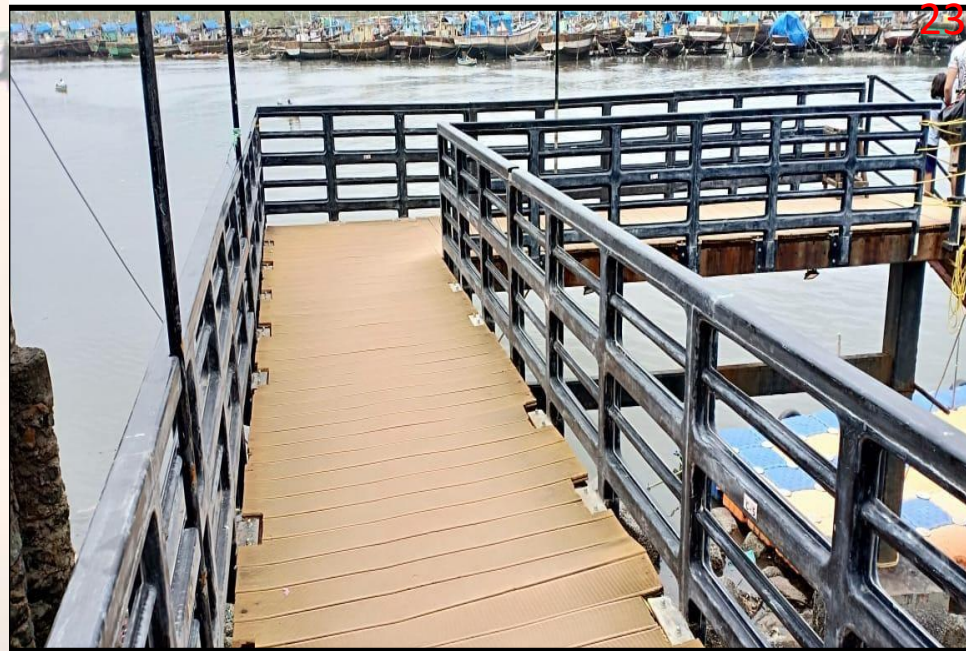
GRPC Screen: (14ft x 5.5ft)
Composite Wt – 180 Kg Single piece construction
Concrete Wt – 2 tons plus.



Modular construction (6 pieces).
Seamless Assembly at site.

RAHEJA – TESLA INDUSTRIAL,
NAVI MUMBAI
COMPOSITE SCREENS 70ft x 24ft

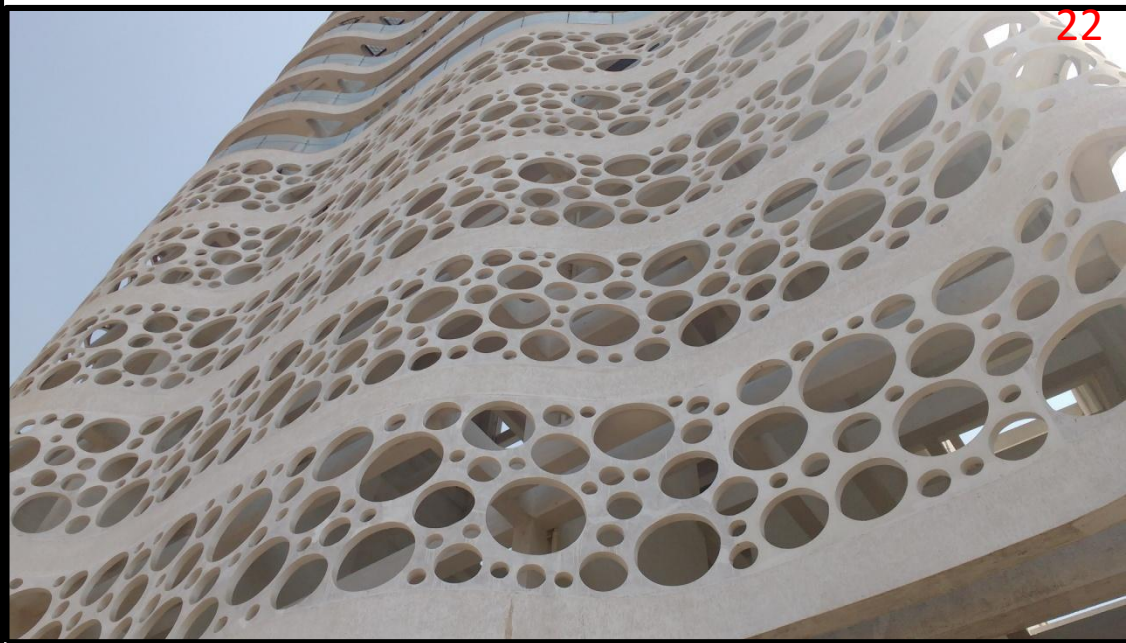




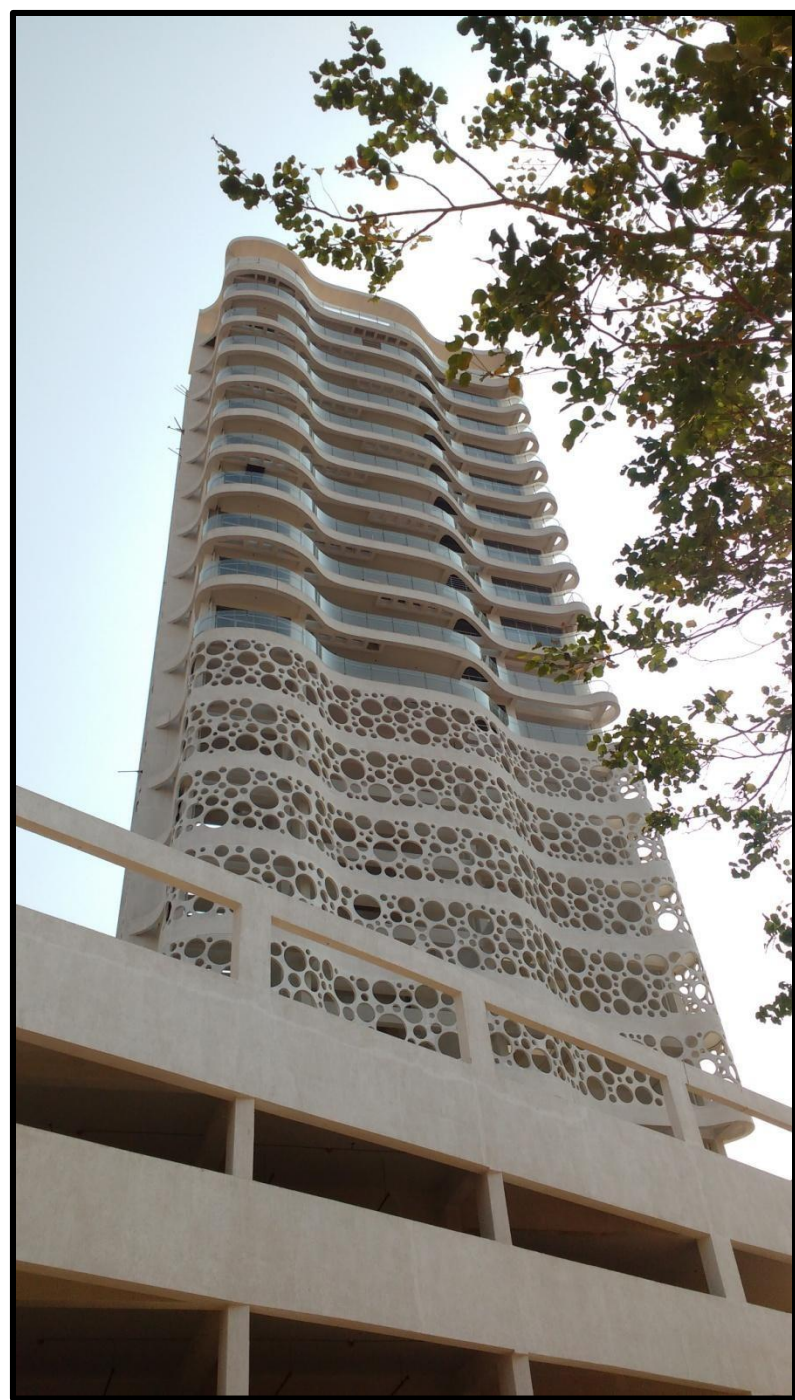
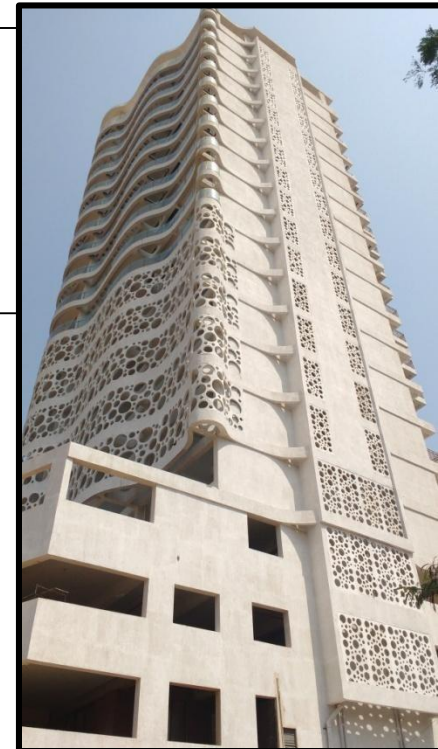
RAHEJA EXOTICA : NON CORROSIVE
COMPOSITE RAILING, MADH
ISLAND, MUMBAI

VASCON – WINDERMERE,
KOREGAON PARK, PUNE –
COMPOSITE PERGOLAS.



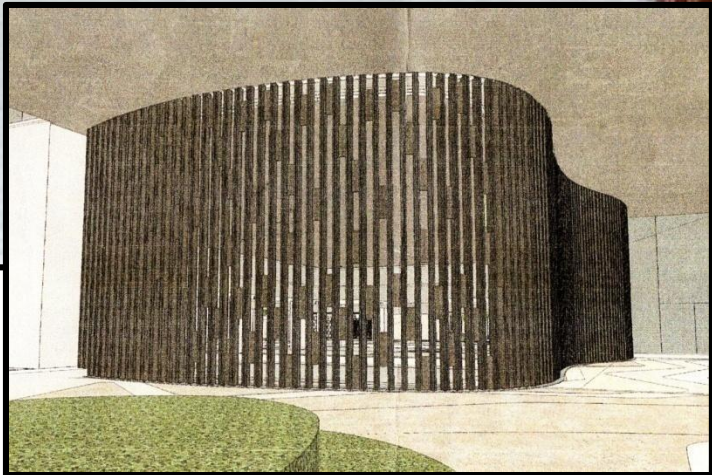
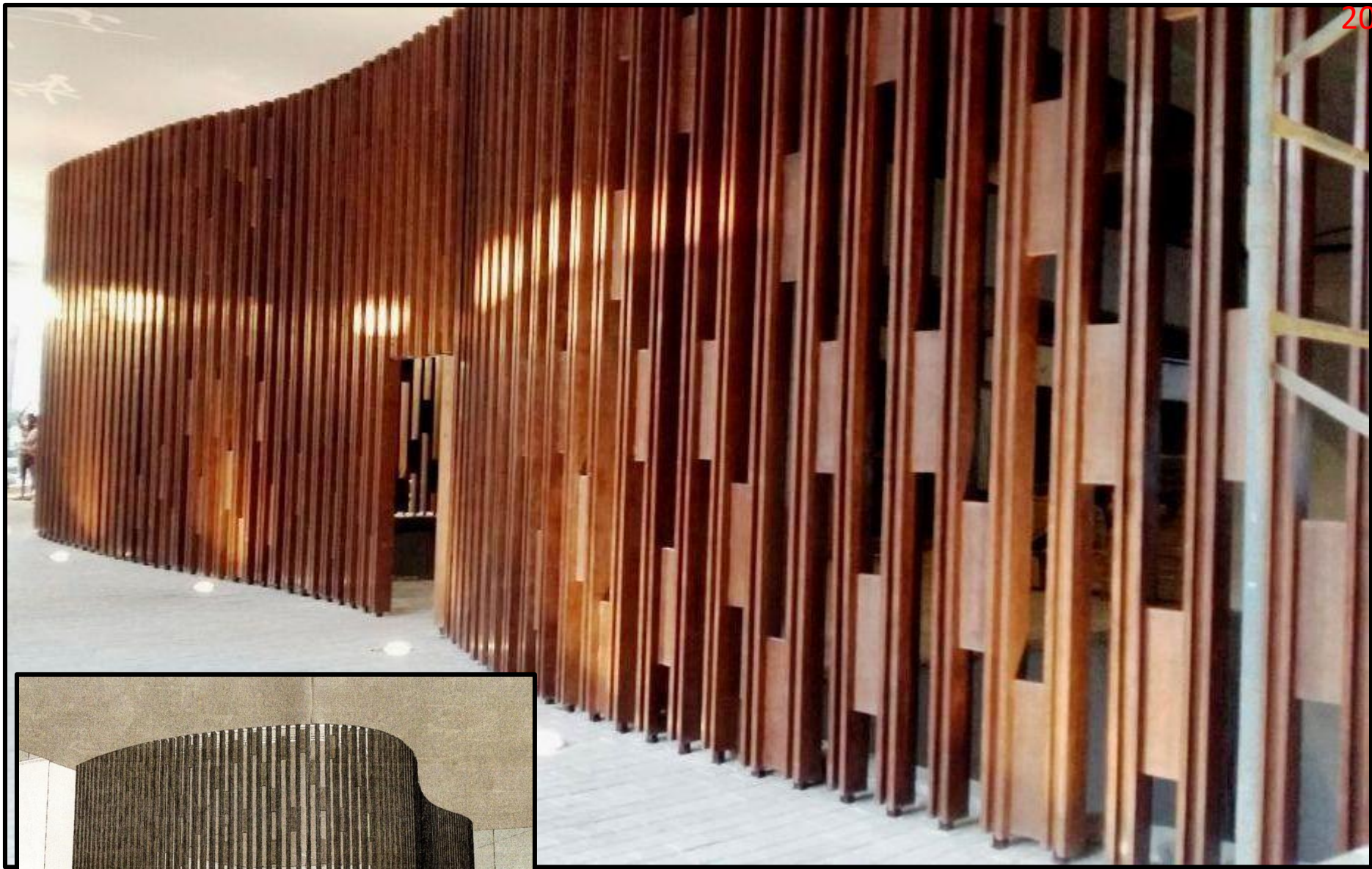


VISTAAR – MAITRI
BUILDING, KHARGHAR.
EXTRA ORDINARY SIZE AND
SHAPE LIGHT WEIGHT
COMPOSITE FAÇADE.





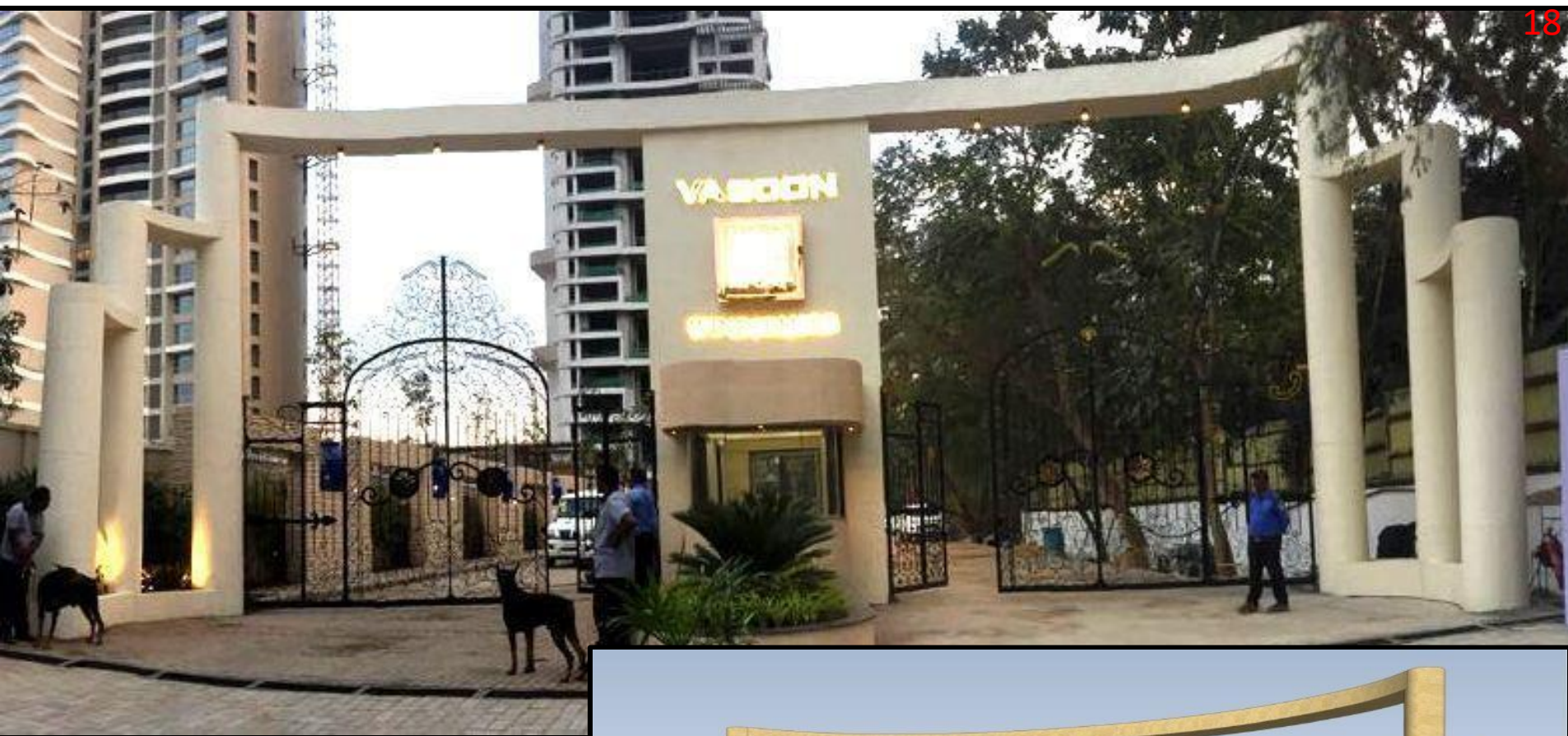
Kohinoor Sapphire – 1, Pune. Podium
Composite Screens



Kanakia, Aroha reception lobby:
Composite Wood finish façade,
Goregaon, Mumbai

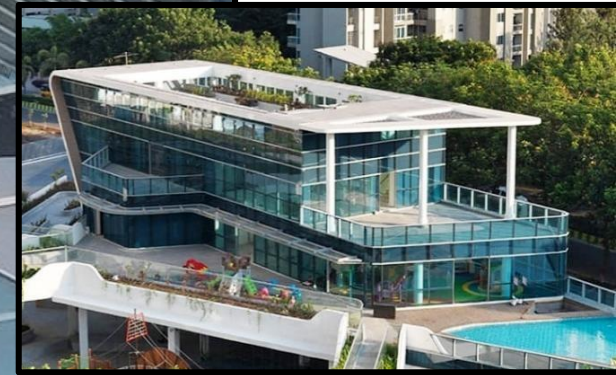


**KANAKIA – BKC PARIS–ELEVATION TREATMENT.
COMPOSITE – CORNICE, RIBS, FLAT STRIPS.**



VASCON WINDERMERE,
KOREGAON PARK,
PUNE—MEGA GATE
STRUTURE IN
COMPOSITE
MONOLITHIC FINISH,
WITH GATE, SIGNAGE,
CABIN.





**AMANORA – GATEWAY TOWER,
PUNE– EXQUISITE LIGHT
WEIGHT COMPOSITE CANOPY.**



**AMANORA – PUBLIC SQUARE,
PUNE– MEGA COMPOSITE
COLUMNLESS PERGOLA
STRUCTURE.**



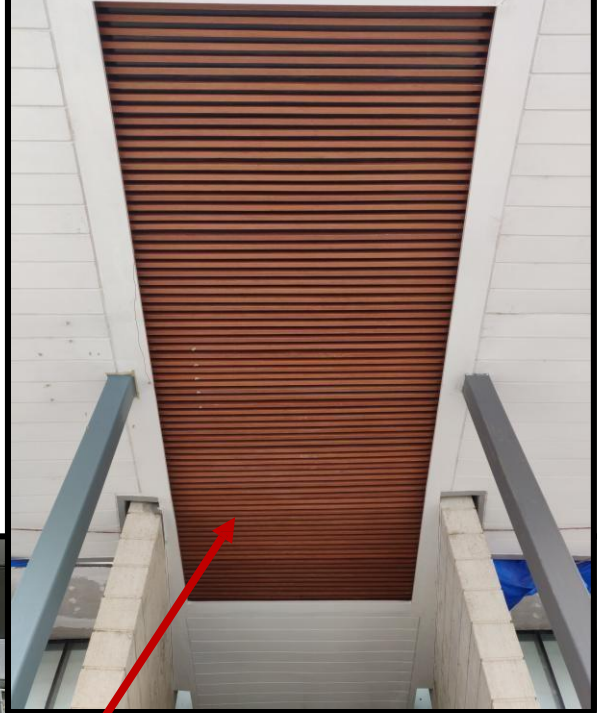
VASCON – WINDERMERE KOREGAON PARK, PUNE – COMPOSITE - WOOD FINISH MEGA ENTRANCE LOBY CANOPY





**KALPATARU – KL RESIDENCY,
HYDERABAD – GRPC FINIS**

Cover + Fin Details



KALPATARU – JADE RESIDENCY, PUNE- COMPOSITE ENTRANCE LOBBY CANOPY



Joint between
GRPC & RCC



VASCON – AMENITY SCHOOL, PUNE– COMPOSITE CANTILLIVER CANOPY

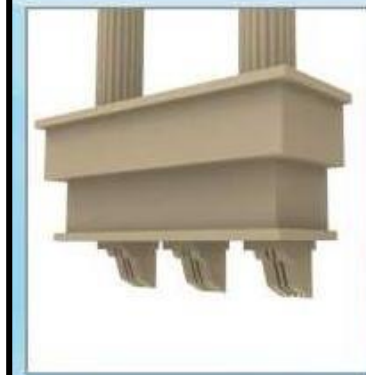
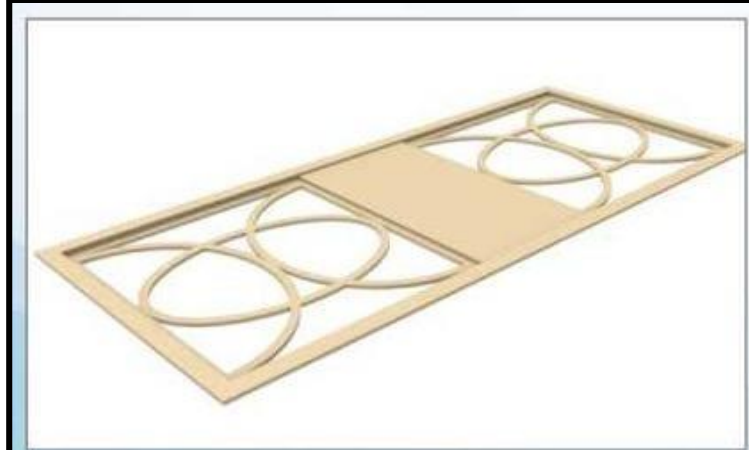
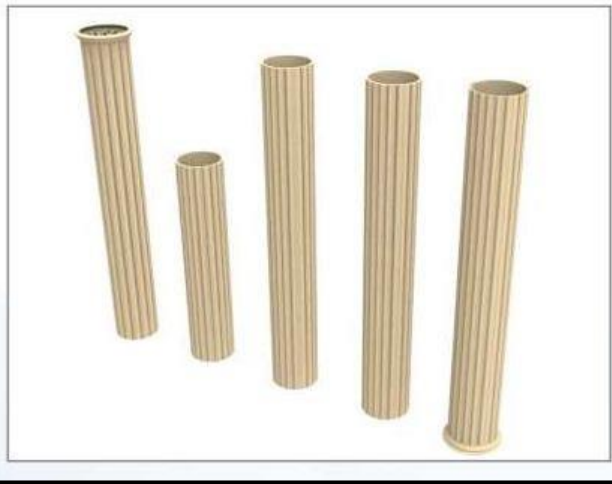


Super light,
Super strong



PRATIK GARDENS,
NAVI MUMBAI –
LARGE COMPOSITE
PILLARS





PRATIK GROUP – PRATIK GARDENS,
ARCHITECT'S CONCEPTS



Pratik Gardens, Vashi, Navi Mumbai



**KRISSH
DEVELOPERS**

**COMPOSITE
BALCONY
PILLARS.**

**FACTORY
MADE,
CONSISTENT
SIZE & SHAPE**



Fixing brackets embedded.
Threaded brackets
embedded to fix grills



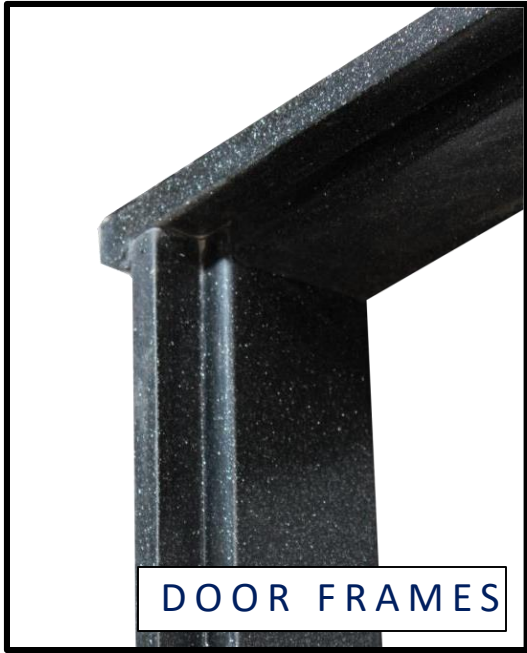
WINDOW CANOPY



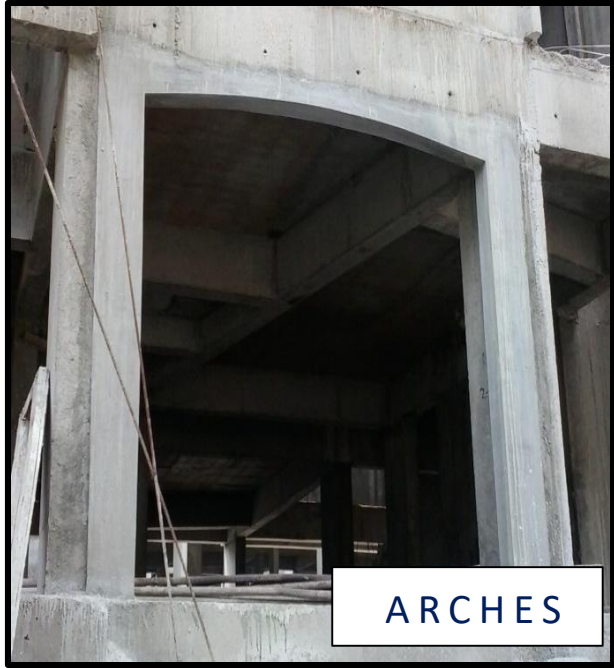
CORNICE



CORNICE



DOOR FRAMES



ARCHES



PARTITION PANELS



SLAB PANELS

BULK QTY
ORDERS



LODHA - COMPOSITE
LIGHTWEIGHT MUMTY (UGT)
COVER. 3mX2.6m, Wt: 180
KGS



APPLICATIONS:
WALK WAYS, FOOT PATHS, FOOT
BRIDGES, METRO PLATFORMS, TRAIN
PLATFORMS, PCC.



GRPC SCREENS



**KALPATARU
SCREEN**



**PALAVA
SCREEN**



6

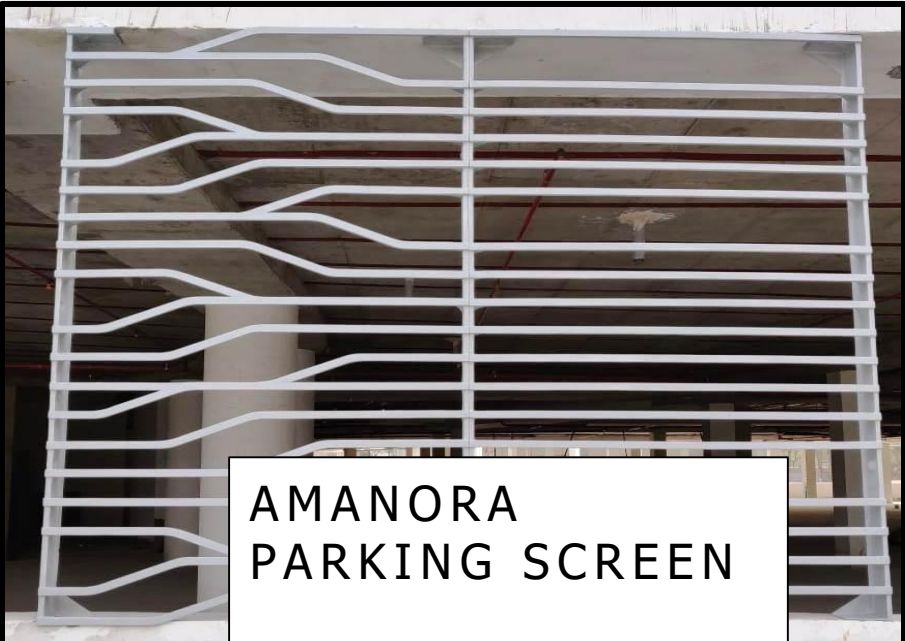
**ANJUR CLUB
HOUSE SCREEN**



GRPC SCREENS



JOGESHWARI
SCREEN

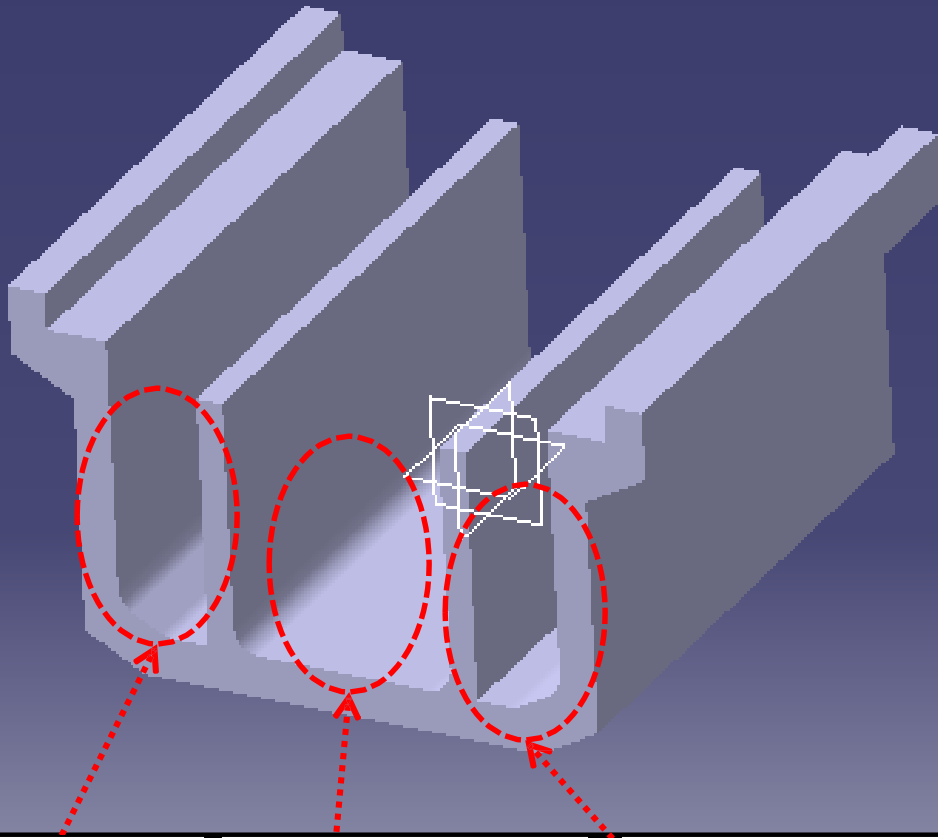


AMANORA
PARKING SCREEN



MLCP SECTOR 3 –
BRICK FACADE

MULTI-UTILITY CHANNEL



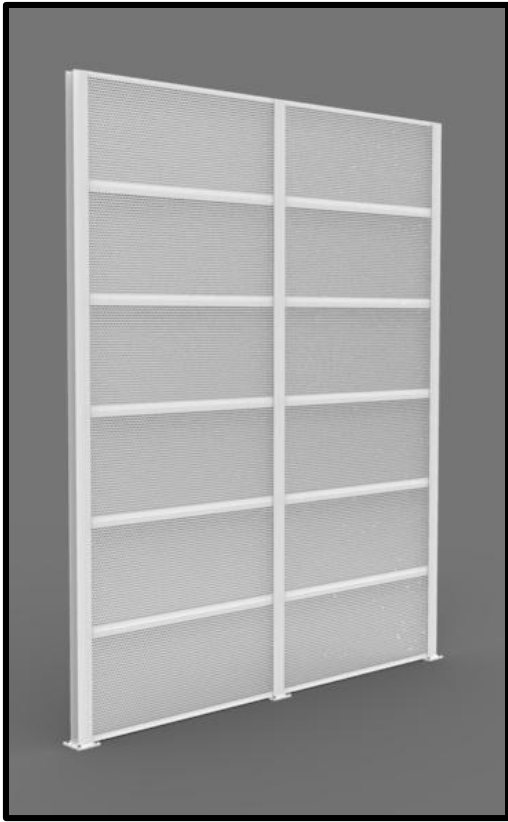
Gas pipe line

Sewage water line

Optical cable line

Slender sections possible due to M200 strength. Ribs provided for structural integrity.





J KUMAR – FRP COMPOSITE
BASED – SOUND BARRIERS
AND DIVIDERS



Sound barrier on highways



CLIENTS:



KALPA-TARU



Vistar Builders & Developers



THANK YOU!

Advance Composite Engineering System

- **Office:** 15, Rajyog Society, Baner Road, Baner, District Pune - 411045
- **Factory :** Gat No.473, Mukaiwadi, Taluka Mulshi, Pune - 412115

Contact : +91 9527980111 (Sales – Bhupesh Kamrani)

E mail : advancedcomposite21@gmail.com / bhupesh.kamrani@advancedcomposite.in

Website: www.advancedcomposite.in